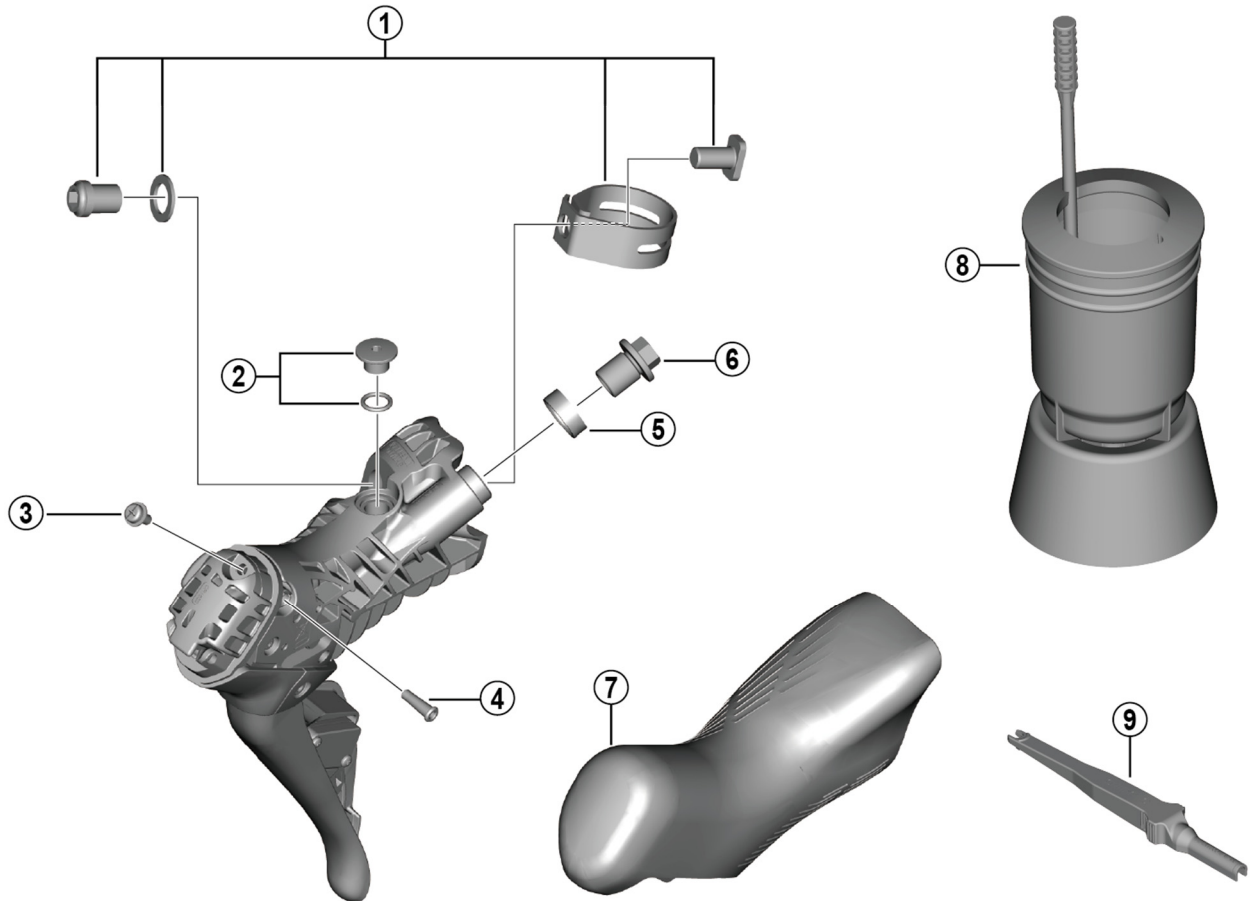


SHIMANO 105 Dual Control Lever (For Disc Brake)

**ST-R7170** (2x12-speed)



ITEM NO.	SHIMANO CODE NO.	DESCRIPTION	INTERCHANGEABILITY	
1	Y0E098030	Clamp band unit diameter (23.8 - 24.2 mm)	A	
2	Y0RM98020	Bleed screw and O-ring	A	
3	Y0MX40000	Battery case screw	A	
4	Y0RM9802T	Dummy plug	A	
5	Y0RM9801T	Joint support ring	B	
6	Y8RD02000	Flange flare nut (M9/black)	A	
7	Y0RM98010	Bracket covers (pair)	A	
8	Y13000090	TL-BR002 Funnel unit for M7 screw	A	
9	Y7HE40000	TL-EW300 Plug tool	A	

A: Same parts.

B: Parts are usable, but differ in materials, appearance, finish, size, etc.

Absence of mark indicates non-interchangeability.

Specifications are subject to change without notice.

ST-R8170

Jun.-2022-4928

© Shimano Inc. I

**SHIMANO**